



## In This Issue

- Managing Rice in a Late Planted Year
- Some considerations for a late planted year
- Meet the Rice Farming Systems Advisor
- Stem Rot Management Update
- Yields and nitrogen management following a fallow year
- Weed Management in 2023: what can we expect?
- New product registrations for 2023
- Certified Seed Update

### Whitney

### Brim-DeForest

UCCE Farm Advisor  
Sutter, Yuba,  
Sacramento and Placer  
Counties

## Managing Rice in a Late Planted Year

Kassim Al-Khatib, Professor, UC Davis

Whitney Brim-DeForest, UCCE Rice Advisor

Luis Espino, UCCE Rice Advisor

Ian Grettenberger, UCCE Assistant Specialist

Bruce Linquist, UCCE Rice Specialist

This season may be a late-planted one due to the potential for a wet and cool spring. Our research has shown that delayed planting reduces yield potential (yields tend to be about 5 sacks/acre less when planted at end of May compared to beginning of May). Furthermore, late planting push harvest into fall where rains delay harvest, reduce quality and drive up drying costs. Growers do not want to pay for unnecessary costs. In this article we discuss a few items that will help with earlier planting, shorter season and reduced costs.

### Land preparation

Land preparation typically starts at the beginning of April when soils are dry enough to open the ground - allowing soils to dry out faster. As we write this in early April, no ground has been opened up and more rain is a possibility. On a positive note, the long wet winter and spring will likely have resulted in better straw breakdown than a typical year. This may make ground work a bit faster and easier and possibly let you get by with one less pass. That said, you do not want to skimp too much on seedbed preparation. Good weed and water management later in the season depend on a good seedbed.

### Varietal selection

Good variety selection is key. You want a short duration variety that is cold tolerant. M-206, M-210 and M-105 are good options. The shorter duration will allow for earlier harvest. However, cold tolerance is important as well.

### Water management

A late planting date shifts the early booting stage (when rice is sensitive to cool temperatures and blanking) later in the year when night time temperatures are lower. Thus, in addition to proper variety selection, it will be important to raise flood water height to about 8 inches between PI and heading to protect the emerging panicle from the cold temperatures.

### Fertility management

*Nitrogen rate:* You do not want to over apply N. Over application will delay harvest and increase risk of blanking. Given these risks, a shorter growing season, and the reduced yield potential due to late planting, you may consider reducing overall N rate by 5-10% from what you typically apply.

*Starter fertilizer:* Apply P and K only if needed. If your soil P values are above 15 ppm (Bi-carbonate P) or if your soil K values are above 120 ppm, applications of these nutrients may not be necessary. If you do not need P and K then do not apply a starter but rather apply all N as aqua. If applying a starter fertilizer, consider applying 20-30 days after planting. This has

several benefits: it eliminates a pass before planting allowing for earlier planting, it reduces scum build up (more likely in a late planted year due to warmer weather), and it can replace the post-herbicide N application that many growers practice.

*Top-dressing N:* Only top-dress if necessary. A leaf color chart or GreenSeeker is a good tool to determine if it is necessary. Unnecessary top-dressed N increases costs, delays harvest and can reduce yields. Our research continues to confirm that splitting N between a preplant and top-dress N application has no yield benefit compared to applying it all preplant.

*Avoid at all costs:* You want to avoid a situation where you have N fertilizer in the field and you are not able to flood the field. In wet years, this can be a problem as rainfall may necessitate halting fertilizer applications or other field work after fertilizer operations have already begun. If fertilizer gets wet and you are not able to flood it is almost impossible to figure out how much N is potentially lost. Good planning and checking weather forecasts will help avoid these situations. A couple of days delay in planting is likely better than getting caught in the above scenario which will not only result in fertility management problems but also weed problems.

### **Weed management**

It is likely that the weather will be warmer at later planting dates. Weeds will emerge and grow quickly, due to the warmer temperatures. Late watergrass and early watergrass may emerge before the rice in a flooded field. This means that you will need to be careful about herbicide application timing. It will be important to apply herbicides based on weed and rice growth stages, not based on days after seeding. If applications are made based on the number of days after seeding, they will be applied too late, and this will result in poor control. In general, applications should be as early as possible based on the labeled recommendations for each herbicide.

Due to warm temperatures, some herbicides will work better. This will be good for weed control, but the herbicides will also be harder on the rice, causing more phytotoxicity than normal. You may see greater stand reduction with Cerano. ALS-inhibitors (Granite GR/SC, Sandea, Halomax, Londax, Strada, and Regiment) may cause stunting and root pruning especially when applied at early growth stages but the rice should recover. Butte, League MVP, and RebelEX may also cause stunting and root pruning due to the fact that all contain ALS-inhibitors as part of the mix.

### **Pest management**

Late planting will likely result in warmer temperatures during seedling development. Seedling pests like tadpole shrimp (TPS) and rice water weevil (RWW) will develop faster and have the capacity to cause more injury. Under warm weather, TPS will grow and reach a size that can injure rice fast (as quickly as 5 days after the flood is initiated). Germinating rice seeds and seedlings that only have a coleoptile and radicle (no green tissue yet) are preferred by the TPS. Monitor your fields closely during this time and use an insecticide if you see TPS before the rice has any green tissue. Quickly growing TPS means it is easier to miss a problem field or get surprised by TPS.

RWW overwinters in vegetated areas around rice fields and fly to flooded fields during warm and calm nights. Usually the period of RWW flight is extended during several weeks starting in April, but with the current conditions, we might see a more concentrated flight period once temperatures start increasing. If you are in an area with a history of RWW problems, it might be wise to do border treatments soon after the seedlings break the water line.

We are not sure how late planting will affect armyworms. We could see infestations occur when plants are younger than usual, which would make the effect of defoliation more severe. In any case, we will be monitoring armyworm moth flight during the season and will be distributing this information through the UC Rice On-line website.

Blast has not been much of a problem for the past two years. However, looking back at my notes for the 2010 season, when blast was a widespread problem through the valley, I have late planting as one of the factors that probably contributed to the problem. As plants age, they become more resistant to blast infections. Younger plants during weather periods that allow for blast development (warm nights with free water on the leaves) may allow for more infections that can increase incidence (number of plants affected) and severity (how bad the infections are). Managing the crop to limit conditions that favor blast is the best way to prevent infections. To prevent blast, avoid excessive N fertilization, avoid draining the field during crop development, plant the less susceptible variety M-206 or the resistant variety M-210, and avoid plant stresses like nutrient deficiencies, salinity or herbicide injury. If you plant varieties that

are less tolerant such as M-209, or M-105, keep a close eye on the field during boot and heading. If infections are detected during tillering, or if we start seeing overcast nights with long periods of dew on the plants before heading, a fungicide application should be made at the very early heading stage to protect from neck blast.

### No-till rice

No-till may be a practice that is considered in a late planted year. Since you are not doing tillage work, it has the potential benefits of allowing an earlier planting and reduced costs associated with tillage operations. In addition, weed control costs may be reduced. In previous work at the Rice Experiment Station, we found that yield potential in no-till systems was similar to conventional systems. Here are some things you should consider when practicing no-till:

1. You want to select the proper fields. They should not be rutted from the previous seasons harvest events. The field should not have a straw mat across the surface (i.e. from using a cage roller in the fall), which could impact root penetration. Some standing stubble is not a problem as it helps young seedlings stay in place in case of high winds.
2. If it has rained recently and you CAN see emerged weeds, apply a non-selective herbicide, such as glyphosate to kill emerged weeds. It is recommended to apply glyphosate by ground rig, not by air, to avoid drift issues. Flood fields 24-48 hours after application and seed into the flooded field.
3. If it has not rained recently and you DON'T see emerged weeds, you can:
  - a. Flood and seed the field, OR
  - b. If you want to recruit more weeds, you could flush the field with water to germinate weed seeds and then kill these weeds before flooding and planting the field (we call this a stale seedbed). To ensure maximum control, you should wait at least 1 week between the flush and the glyphosate application.
4. Use a higher seeding rate to ensure good stand density.
5. Although the pre-plant glyphosate application should kill most grasses, it will be necessary to follow up with a sedge and broadleaf herbicide at the 3-4 leaf stage of rice.
6. You want to avoid disturbing soil and bringing new weeds to the surface so all fertilizers should be applied to the surface. This means using urea pellets instead of aqua. We recommend applying urea preplant to the soil before flooding. Flooding will help move the urea into the soil. Do not apply urea immediately after flooding. If you do not apply before flooding, you could wait about 3 weeks and apply the urea at that time. Apply starter fertilizer by plane after rice leaves have emerged above the soil surface to avoid scum. You may need to apply a top-dress N application as N fertilizer applied to soil surface is generally not used as efficiently as injected aqua. Use a leaf color chart to help make this decision.
7. Keep water level low in field until roots anchor into soil.



### Some considerations for a late planted year

*Bruce Linquist, UCCE Rice Specialist*

As I write in late March, no one is out in the fields yet. It is too wet. This suggests that planting will be later than normal. On a positive note, I did see that NOAA has forecast a drier than normal April. Anyways, with this I would like to suggest some thoughts for planning.

First, from our Yield Contest data, we have seen that it is really important to ensure good stand establishment. In late years, it is easy to get in a rush and skip steps. While this may be necessary, make sure you do your best to get a good stand. You want an evenly spaced 25 established plants per square foot.

Second, a late planting will probably mean a later harvest. With late harvests, one risks fall rains which can further delay harvest and reduce grain quality. On your late fields, think about planting earlier maturing varieties such as M-105, M-206 and M-210. These varieties have good yield potential but are about 5-7 days earlier (more in the southern part of valley) the M-209 or M-211. These longer duration varieties should be planted in earlier fields if possible.

Third, do not over fertilize with nitrogen as this can further delay harvest. For more on this, see the other topic I have written on for this newsletter.

## Meet the Rice Farming Systems Advisor Serving Colusa and Yolo Counties

Anthony Fulford will take on a new role with UCCE extension as a Rice Farming Systems Advisor serving Colusa and Yolo counties on May 10<sup>th</sup>. Anthony is looking forward to going out on farm calls, meeting PCAs and CCAs in the region, and developing the direction of his research and extension program. Anthony is interested in understanding the opportunities and challenges of rice production in the Sacramento Valley and is excited to hear from many of you in the coming months, but until then, let's tell you a little more about Anthony's background and what he will be doing in his new role.



Anthony grew up in Illinois and obtained a master's degree in soil science from Southern Illinois University and a Ph.D. in soil fertility and rice production from the University of Arkansas. This academic training has given Anthony a strong understanding of soil fertility, plant nutrition, and rice cropping systems. A postdoctoral position with The Ohio State University gave him an opportunity to gain additional research experience with soil health testing and nutrient management of rainfed field crops. Anthony is also a CCA and his knowledge of diverse cropping systems, particularly rice production in the Midsouth, will serve him well as he learns more about rice production in California.

Anthony's experience working with agricultural extension began in Arkansas, where he worked directly with rice farmers and extension educators to conduct research across the state. He was able to validate the usefulness of a new, site-specific nitrogen soil test method for direct-seeded, delayed-flood rice, something that would not have been possible without ongoing discussions with Arkansas' rice growers. Similarly in Ohio, Anthony was part of a collaborative effort among farmers, extension educators, and researchers to revise fertilizer recommendations for corn, soybeans, wheat, and alfalfa. In 2018, he accepted a position with UCCE as a Nutrient Management and Soil Quality Advisor serving Stanislaus, San Joaquin, and Merced counties. It was in this role that he developed his own research and extension program in collaboration with farmers and ranchers in the San Joaquin Valley. He gained a better understanding of the tradeoffs that were faced when using compost and dairy manure as fertilizer sources and shared this knowledge with farmers and advisors at field days and winter meetings.

As an incoming Rice Farming Systems Advisor in Colusa and Yolo counties, Anthony expects to work with rice farmers and industry groups on methods that improve the overall efficiency and resiliency of California's rice cropping systems. Finding ways to conserve water, reduce environmental and social costs, and maintain high standards for rice grain yield and quality are constant challenges to the industry. Anthony sees the opportunity for innovative crop rotations and winter conservation practices to meet the needs of industry and society. However, bringing about change requires getting these practices implemented across the rice landscape, so Anthony is excited to start this new position and learn from farmers about what is working and what needs to be improved to ensure rice grown in California continues to lead the industry.

*Anthony Fulford will start his position as a Rice Farming Systems Advisor in Colusa and Yolo counties on May 10<sup>th</sup> and can be contacted at the Colusa County office.*

We're  
**HIRING**

**Come work with our rice team -  
currently looking for Ag Tech's!**

[- Click here to apply -](#)

UC  
CE

UNIVERSITY OF CALIFORNIA  
Agriculture and Natural Resources

Cooperative Extension

## Some considerations for a late planted year

*Bruce Linqvist, UCCE Rice Specialist*

As I write in late March, no one is out in the fields yet. It is too wet. This suggests that planting will be later than normal. On a positive note, I did see that NOAA has forecast a drier than normal April. Anyways, with this I would like to suggest some thoughts for planning.

First, from our Yield Contest data, we have seen that it is really important to ensure good stand establishment. In late years, it is easy to get in a rush and skip steps. While this may be necessary, make sure you do your best to get a good stand. You want an evenly spaced 25 established plants per square foot.

Second, a late planting will probably mean a later harvest. With late harvests, one risks fall rains which can further delay harvest and reduce grain quality. On your late fields, think about planting earlier maturing varieties such as M-105, M-206 and M-210. These varieties have good yield potential but are about 5-7 days earlier (more in the southern part of valley) the M-209 or M-211. These longer duration varieties should be planted in earlier fields if possible.

Third, do not over fertilize with nitrogen as this can further delay harvest. For more on this, see the other topic I have written on for this newsletter.



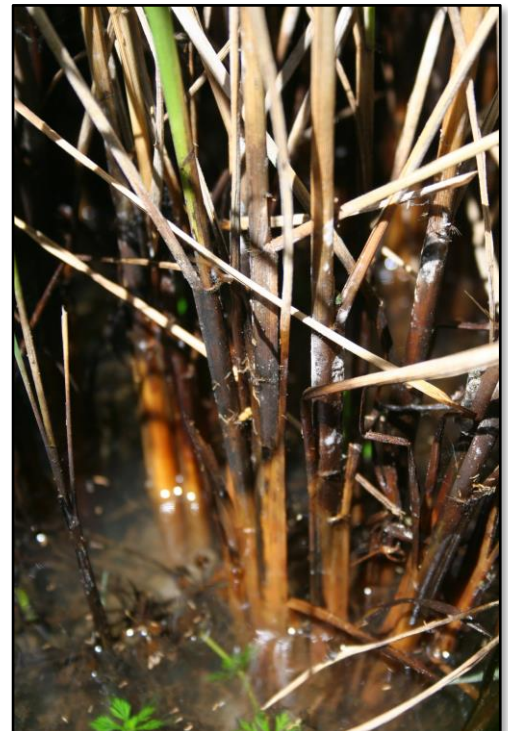
## Stem Rot Management Update

*Luis Espino, UCCE Rice Advisor*

In general, rice diseases are not a big problem in California. However, in some fields, disease pressure can be high and can result in yield losses. One disease that can be found in practically every rice field is stem rot. This fungus causes the tillers to rot at the water level and, when severe, it causes blanking and lodging. In our fungicide trials, we rate the severity of stem rot at drain time using a scale that goes from 0 to 4, where 0 is no disease and 4 is when the tiller is completely rotted. In my experience, when a field approaches an average severity of 2, a yield loss occurs. The problem with this rating system is that it is very time consuming. However, there is a good relationship between severity and incidence, the percentage of tillers that have stem rot symptoms. As severity increases, so does incidence, and when severity reaches a level of 2, incidence is 100%. This means that if you monitor your field at drain time and find that in a random sample of tillers all show symptoms of stem rot, the field is likely at severity level 2 or above and a yield loss may occur.

While this method of evaluating the level of stem rot in your field may help you explain blanking, lodging, and lower yields, it does not help you with the decision to take any corrective action that year. At drain time, it is too late to use a fungicide. I'm currently working on a project trying to determine if we can evaluate stem rot earlier, around the boot stage. In this way, a grower or PCA can decide if a fungicide treatment for stem rot is really needed before reaching the heading stage. Last year was the first year of this project. More years will be needed to provide a recommendation.

A project I have conducted for the past two years looked at the differences between varieties in their susceptibility to stem rot. All our varieties are susceptible, but there are some differences. Varieties with a short cycle, like S-102, CM-101, or M-105 are more susceptible than varieties with longer cycles, like M-209 and M-211. This information might help growers and PCAs improve their disease management program.



As you know, azoxystrobin (the active ingredient in Quadris) is the main fungicide used in rice in California. Many trials have confirmed that we can obtain stem rot severity reduction when applying this fungicide at the late boot to early heading stage. We also tested applying the fungicide at propanil time, but we did not see any benefits of this application timing. In the variety testing mentioned above, stem rot severity was reduced 20-30% when azoxystrobin was applied at early heading (when the first few heads were visible above the canopy). In 2021 this disease reduction resulted on a 4% yield increase. While in 2022 there was no yield increase, we did see increased milling quality in fungicide treated plots.

---

## Yields and nitrogen management following a fallow year

*Bruce Linqvist, UCCE Rice Specialist*

Last year roughly half of the rice acreage was left fallow. We have been conducting research (funded by the Rice Research Board) looking at the differences between rice grown after a fallow versus rice grown following rice. We have found that rice following a fallow has higher yield potential. In our two years of study we saw about a 2 to 3 sack yield advantage in rice after a fallow. Higher yields may be due to reduced disease incidence. In both years of the study we saw lower incidence of stem rot in rice following a fallow year. As mentioned, this can lead to higher yields but also to less lodging.

Regarding nitrogen management, we used a labeled nitrogen fertilizer to allow us to determine if the nitrogen in the plant came from fertilizer or from the soil. We found that fertilizer N was used similarly when rice followed a fallow or when it followed rice. Interestingly, we also found that when rice followed fallow, more nitrogen was available from the soil – particularly after PI. This has a couple of implications. First, it means if you had a fallow rice field last year, you may be able to back off on your overall N rate. In our data from one year, we found that you could back off by up 20 to 30 lb N/ac. Secondly, most of the additional N availability came after PI. This suggests that if you are routinely topdressing, it may not be necessary when rice is following a fallow year. Regardless, I would still suggest monitoring the crop at PI using a Leaf Color Chart or a GreenSeeker to make a more informed decision about N management.

Some of you may be asking “why do we get more nitrogen in a field that was fallowed?”. This is a great question. In fields that have been in rice where the rice straw is incorporated and flooded during the winter, phenols accumulate. Phenols are an organic compound that tend to build up when organic matter, such as straw, decomposes under anaerobic conditions. Given how most farmers manage their straw we would expect a build up of phenols. In fact, we have looked at soils around the valley and have found this to be the case. Phenols also bind nitrogen, making it unavailable for plants. Imposing long periods of time when the soil is aerobic such as during a fallow period, promotes the breakdown of these phenols and the release of nitrogen.

---

## Weed Management in 2023: what can we expect?

*Whitney Brim-DeForest, UCCE Rice Advisor*

Coming out of 2022, where roughly half of all California rice fields were left fallowed last year, and others may have been fallowed for two seasons, many of us have questions about what weed management will look like in 2023. While we do not have data on what a 1- or 2-year fallow does to all of our major weed species, we have some preliminary and anecdotal data that might lend some insight.

For small-seeded weeds such as smallflower umbrella sedge, redstem, and ricefield bulrush, the fallow period will likely have no effect. A good anecdotal example is from a field in Davis that was planted for a long time in rice, followed by nothing being planted for over 10 years. Once the field went back into rice, ricefield bulrush was widely distributed throughout the field, and readily emerged. Ricefield bulrush seeds have a thick seed coat, making it easy for them to survive in the soil for a long period of time, and they have a high level of dormancy, increasing their

persistence. In an unpublished overwintering experiment with smallflower umbrella sedge to determine if decomposition occurred over the winter in flooded conditions, the smallflower seeds did not decompose. Seeds of smallflower umbrella sedge are also found in the 1,000s per square foot of soil, so once established, they are difficult to get rid of.

For larger seeded weeds including watergrass, a fallow may have an impact, but that impact will likely only be on those weed seeds near the surface of the soil, where they may decompose, and are at increased chance of predation. In a preliminary study conducted last year, we found that in fields where tillage occurred in the spring post-fallow, watergrass emerged, as seeds were brought up from deeper in the soil profile, where they would have remained dormant if tillage did not occur. In fields that were no-till in the spring, in at least one instance, the watergrass did not emerge at the same rate as in the tilled field. Similar results were seen with arrowhead, a perennial aquatic species. The effect of the tillage was to bring up the seeds from deeper in the soil profile, increasing emergence in the tilled area of the field.

At this time, no anecdotal or preliminary data exists for sprangletop. However, due to the small seed size and high dormancy period, it is likely that sprangletop would not be greatly affected by a fallow period and would emerge as normal.

Preliminary data from grower fields that were monitored over three years shows a reduction in weedy rice seed viability in the top 12 inches of soil. However, these fields have not been planted back into rice, so it is unknown whether the reduction of viable seed in the soil translated to reduced emergence.

To summarize, it is unlikely the 1- to 2-year fallows will cause a great reduction in weed emergence, especially for small-seeded species. For larger-seeded species, there may be an impact, which can be increased by use of zero- or reduced tillage in the spring following a fallow period.

*"Originally published in Rice Farming, February 2023".*



### **New product registrations for 2023**

*Roberta Firoved, California Rice Commission*

The California Department of Pesticide Regulation (DPR) finalized registration of two products from Corteva Agrisciences. The herbicide, florypyrauxifen-benzyl (Loyant) as Loyant® CA with Rinskor™ active Herbicide (Loyant), and methoxyfenozide (Intrepid® 2F) for armyworm control.

Information to know about Loyant:

- All applications by ground
- Corteva will provide stewardship
  - No certificate required
- No labeled buffer zones
- 60-day PHI

Information to know about Intrepid® 2F:

- No Section 18 = no permit requirement
- The Intrepid® 2F label or supplemental label must include 'rice and 'armyworm'
- If a supplemental label is required, it must be in hand from sales to application

Your Corteva contacts are Paige Gill M: 530.650.6325 E: [paige.gill@corteva.com](mailto:paige.gill@corteva.com) or Daniel Abruzzini M: 209.338.7405 E: [daniel.abruzzo-1@corteva.com](mailto:daniel.abruzzo-1@corteva.com) for product details.

## Certified Seed Update

*Timothy Blank, Director of Seed Certification Operations, California Crop Improvement Association*

With the improved water situation, rice seed acres should increase to normal levels. In non-drought years, total acres inspected are approximately 30,000 acres, and acres approved for seed are around 26,000 acres. Even though rice seed acreage was significantly down in 2022, with only 18,553 acres approved for seed, there are only shortages among a few specialty rice varieties (i.e. Calmochi-203, Calaroma-201, Koshihikari).

Variety updates. The most recent acreage breakdown of varieties by grain type was 88% medium grain, 7% short grain, and 5% long grain. In 2022, there were 42 varieties of rice in seed production, of which 29 were in the Certified seed program and 13 in the Quality Assurance program. Calhikari-203 and M-521 (ROXY rice variety) were approved for certification in February of 2023. The ROXY-associated herbicide is still awaiting approval from EPA and C DPR.



### Useful Websites

Weedy Rice: [www.caweedyrice.com](http://www.caweedyrice.com) The California Weedy Rice website (a collaboration between UCCE and the California Rice Commission) contains information on identification, best management practices, sample collection, and additional resources on weedy rice. There is also a link to subscribe to our “Weedy Rice” e-communication, which will keep the rice industry updated on the latest information on weedy rice, as we progress through the rice season.

UC Rice: <https://rice.ucanr.edu> Find the latest information on rice in California, including meeting announcements. This site is a collaboration between the entire UC Rice Team.

UC Rice Rotation Calculator: <https://rice-rotation-calculator.ipm.ucanr.edu/> An economic decision-support tool, this can help growers and PCAs to make informed decisions regarding switching from one crop to another.

**ANR NONDISCRIMINATION AND AFFIRMATIVE ACTION POLICY STATEMENT FOR UNIVERSITY OF CALIFORNIA May, 2015.** It is the policy of the University of California (UC) and the UC Division of Agriculture & Natural Resources not to engage in discrimination against or harassment of any person in any of its programs or activities (Complete nondiscrimination policy statement can be found at <http://ucanr.edu/sites/anrstaff/files/215244.pdf>). Inquiries regarding ANR’s nondiscrimination policies may be directed to Linda Marie Manton, Affirmative Action Contact, University of California, Agriculture and Natural Resources, 2801 Second Street, Davis, CA 95618, (530) 750-1318.